



P.O. Box 482  
Fayetteville, WV 25840

A nonprofit citizen's coalition working within the community to promote responsible economic development and sustainable environmental management.

Newsletter - Volume 12, Number 2

[www.plateauactionnetwork.org](http://www.plateauactionnetwork.org)

304.574.4726

March 2011

Email [pan.action@gmail.com](mailto:pan.action@gmail.com)

## From the Chair

Eric Autenreith

With only 3 board members, PAN faced a difficult situation. Our choices ranged from dissolution to finding a new direction. We chose the latter. Late in 2009, we funded the Watershed Coordinator position. During 2010 we put on a great spring fund-raiser, renewed our relationship with the National Committee for New River (NCNR), Funded another OSM-VISTA, crafted a 5 year plan (see PAN website), created a memorandum of understanding with NCNR, turned out four newsletters, kept the Wolf Creek and Summerlee remediation projects going and created a membership survey.

A review and much deliberation over the survey results we recognized PAN had to move from an all volunteer organization to having paid staff. Paid staff keeps projects rolling greatly reducing director volunteer time and workload.

Even this past year, with Levi and Laurel doing so many projects, we felt breathing room to function as a more traditional board, building connections and attending to the big picture and long term planning. This was the focus of December's important membership meeting.

Though this meeting was lightly attended we made important progress. Most significantly, we changed the by-laws making board of directors nominations and elections less cumbersome, yet still open and transparent to the members and we gained three board members!

We are pleased to welcome back former board members Gene Kistler and Mark Lewis, and new board member Chris Darrow. Thanks you three!

*We do have space and need for three more directors. Please consider stepping up to the plate and taking your turn to serve.*

Laurel and Kim Maxwell are heading the spring fundraiser planning. I'm sure they would appreciate offers of help setting it up and for donations of fabulous things for the live auction.

We voted on board positions at our last meeting and I am returning to being our secretary, Mark Ehrnschwender is resuming as chair, Mark Lewis will serve as co-chair, Gene will continue as WCET trustee, and Joy continues as treasurer.

### In this Issue:

1 From the Chair	6 She Was So Commercial
1 PAN Spring FUNdraiser!	7 Fayette County Farmers Market
2 Wild & Scenic Film Festival	7 Adopt-A Highway
2 Earth Day 2011	7 NRCWA
3 Fayette Square Bioretention Project	7 Forks in the Road
4 On a Mountain Top Near You?	7 Ed's Notes
4 Natural Processes Treat AMD	8 Schedule of Events
5 NRB&NC	

## PAN Spring FUNdraiser!

Laurel Ackison, PAN - OSM VISTA

Spring is upon us! And that means it's time for PAN's annual Spring FUNdraiser Party.

Several PAN members have been working together to create a fun-filled fundraising fling.

With your ticket, you'll enjoy complimentary drinks and a meal, live music, and a live auction!

Local artists are donating beautiful art pieces to be auctioned. You can also get the latest scoop on PAN's operations and hear the exciting work our Watershed Coordinator is doing.

**Where:** Smokey's on the Gorge

**When:** Saturday, March 26 from 7 to 11pm.

**Tickets:** \$30/person and \$50/couple.

All proceeds and donations will support PAN's activities, like stream restoration and AMD remediation.

We hope to see you there!



Some of Last Years Fun - Live Auction was a Big Hit

# SYRCL's WILD & SCENIC® FILM FESTIVAL

## Wild & Scenic Film Festival

Laurel Ackison, PAN - OSM VISTA

PAN is looking forward to launching this year's Wild & Scenic Film Festival! Levi and Laurel have been working hard to build the community event and get Fayette County students involved, as well.

*Wild & Scenic Film Festival tickets are only \$5.*

This year's festival has some exciting new changes.

First, while the festival is still primarily geared towards films promoting environmental awareness, you may have noticed "Environmental" was taken out of the title. SYRCL (South Yuba River Citizens League) decided to drop the emotionally 'charged' word hoping more people will attend the film festivals, held around the country.

Second, the film festival has a new structure this year. Typically, PAN has a Fayette County high school Wild & Scenic screening, directed by the Fayette County Youth Advisory Board. However, challenges like administrative changes at the Board of Education and an onslaught of snow days required a restructuring of the festival. Though we've received enthusiastic support from high school educators like Doug Hurst (Midland Trail), Hilarie Jones and Randy Boyd (Oak Hill), we've decided having the film festival outside of the schools is best. With this new structure, we'll have a true film-festival spanning two days and two different showings.

The first showing will be the kick-off event for the local Earth Day celebration and will be held Friday evening, April 22 at 6:30pm at the Historic Fayette Theatre.

The second showing is, Saturday evening, April 23 at 7pm at the Historic Fayette Theater following a full day of community Earth Day activities.

Third, several community members will be speaking about the important work they are doing to help move Fayette County toward sustainability.

Savanna Lyons will speak about her work with the Fayette County Farmers' Market and how buying local foods can benefit a community.

Stephanie Tyree will be talking about her efforts to inform and protect Fayette County citizens from proposed Mountain Top Removal.

Heather Lukacs of the New River Clean Water Alliance will talk about the new State of the Watershed report and its importance for lobbying and raising awareness.

Come out for two evenings of films, discussion, and fellowship. We hope to see you there!

PAN thanks the Historic Fayette Theatre for graciously hosting the Wild & Scenic Film Festival for another year.

## Earth Day 2011

Holly Clark - Create Fayetteville

Organizers of the Fayette County Green Team today announced that the 6<sup>th</sup> annual New River Earth Day Celebration will be held Saturday, April 23 downtown Fayetteville (weather permitting) from 12:00 to 5:00pm.



Earth Day Celebration 2010

This year's theme: Reduce – Reuse – Recycle with students from Fayette County middle and high schools already participating in a logo design contest; winners to be chosen in early March.

On April 23, citizens are encouraged to bring their families to learn about recycling/composting, alternative energy, water conservation, sustainability, and reducing our ecological footprint. Geared for the whole family, several events will be taking place that day including the "Rags to Riches" community clothing swap, local food vendors, crafts, a children's concert, games, hands-on activities, and kids' inflatable fun!

"The clothing swap is an opportunity for people to exchange or donate their old apparel," said Karen Domzalski, Earth Day volunteer. What remains after Earth Day will be donated to charity. Domzalski added, "It's an opportunity for people to clean out their closets, donate those old threads, and find some new treasures." People are asked to bring clothes that have been washed and are in good condition.

The Plateau Action Network, will again be the primary sponsor of the 4<sup>th</sup> annual showing of the Wild and Scenic Film Festival. This starts Earth Day activities on April 22, starting at 6:30pm at the Historic Fayette Theater. With a second and different showing on Saturday at 7:00pm [see *Wild & Scenic Film Festival* pg 2].

Other fun events include:

- Window design contest – local businesses will compete to win the "best painted window" honors.
- Recycling drop-off – bring your old batteries (not car), plastics, cardboard, office paper, newspapers, magazines, aluminum, stainless steel, steel 1 & 2, brass, sheet metal, and cell phones to be recycled on Earth Day.



The first of many fund-raisers to support Earth Day will begin on Tuesday, February 22 at Diogi's restaurant where they will be serving a special of tacos and soup or soup and salad all day.

All donations are tax deductible and if anyone would like to contribute, please contact Aimee Rist at 304.890.5794.



Earth Day Fun for Young and Old

## Fayette Square Bioretention Project

Levi Rose, PAN - Watershed Coordinator

After several months of corresponding with the Fayette Square property owner, PAN received approval in January to start working on the Fayette Square Bioretention Filter Strip. The Fayette Square shopping center (Kroger's, Auto Zone, Big Lots, etc.) is located in Oak Hill, WV and accessible from U.S. Route 19 at Appalachian Drive and the Lochgelly Interchange.

Currently, the shopping center parking lot has four concrete gutters that convey surface runoff directly to Wolf Creek. Parking lot runoff is known to contain oil, grease, and toxic chemicals harmful to biological life. In winter months, added elevations of salt enter the stream.



The storm water drainage system is currently unregulated under the National Pollutant Discharge Elimination System (NPDES) permit program or any other city or county ordinances. The proposed project will remedy this problem, by eliminating direct surface runoff from the Fayette Square parking lot to Wolf Creek. The project will involve disconnecting and removing the concrete gutters from the parking lot and installing a bioretention filter strip.

The bioretention filter strip will be installed between the edge of the parking lot and Wolf Creek, and function to reduce pollutants and sedimentation from storm water runoff before it enters Wolf Creek. A small grant will cover design and engineering costs, and get the project shovel ready by late spring.

So you might be asking, "what is bioretention?" Bioretention is a process that removes contaminants and sediments storm water runoff. Storm water is collected into the treatment area. The treatment area consists of a grass buffer strip, sand bed, ponding area, organic layer, planting soil, and plants. Runoff passes over or through a sand bed, which slows the runoff's velocity and distributes it evenly along the length of the ponding area. The ponding area consists of a surface organic layer and/or groundcover and the underlying planting soil. The ponding area is graded, its center depressed. Water is ponded to a depth of 15cm (5.9in) and gradually infiltrates the bioretention area or evapotranspires (evaporates). The storm water stored in the bioretention area's planting soil ex filtrates into the underlying soils over a period of days before it is recharged into Wolf Creek.

Go to our website [www.plateauactionnetwork.org](http://www.plateauactionnetwork.org) then the projects tabs for more information.



Sample Bioretention Cross Section



## On a Mountain Top Near You?

Stephanie Tyree, OVEC - Sludge Safety

Something is stirring in Fayette County and it's not just the first hints of winter's end.

Local residents are coming together to learn about surface mining in Fayette County including mountain top removal mines that are occurring within 5 miles of Fayetteville.

On February 7, almost 40 community members and business leaders came to a meeting about mining in the Fayetteville and Oak Hill area, at the Cathedral Café. The attendees learned that mountain top removal mining has come to the center of Fayette County, smack in the middle of the New River watershed. And this mining operation is seeking to expand and become one of the largest surface mine operations in the area.

Frasure Creek Mining is operating 3 surface mines along Rt. 61, between North Page and Wriston, just outside Oak Hill city limits. The company is seeking permits for six more surface mines, which would create a continuous surface mining area covering over 3500 acres and containing 23 valley fills.

On February 11, over 100 people came to a community meeting in Beards Fork to learn about the very local impacts the proposed mining could have on this and other communities nearby. At least a dozen people from the Cathedral Café meeting came to the Beards Fork meeting and raised concerns about drinking water impacts, flooding and the impacts of surface mining on the booming local tourism industry.

Residents of Kincaid and Page, where mining is already occurring, told stories of current problems with flooding and concerns of how the mining might impact the nearby Page-Kincaid PSD water system.

There is legitimate concern that the surface mining will eventually stretch across the mountain from Beards Fork to Beckwith, leveling one of the most beautiful pieces of land in the county.

Fayette County residents are organizing to save their mountains. Nearly 100 people signed an appeal to stop the permit for surface mine number 4 (Open Fork No. 2) in the area. This appeal is now before the Surface Mine Board and will be adjudicated in a few months time. Community members are also coming together to monitor current mine sites and make sure the company follows the law.

*Together we can protect our water, our health, and the future of Fayette County!*

Interested in getting involved or learning more? Come to our next public meeting – March 7th in Fayetteville. Contact Stephanie at [Stephanie@SludgeSafety.org](mailto:Stephanie@SludgeSafety.org) to get added to the mailing list or call 304.360.2110. [stephanie@sludgesafety.org](mailto:stephanie@sludgesafety.org)

Sludge Safety is a project of the Ohio Valley Environmental Coalition, Coal River Mountain Watch and West Virginia communities working for clean water and community safety near toxic coal waste injections and impoundments.

For more on Sludge Safety go to [www.sludgesafety.org](http://www.sludgesafety.org)

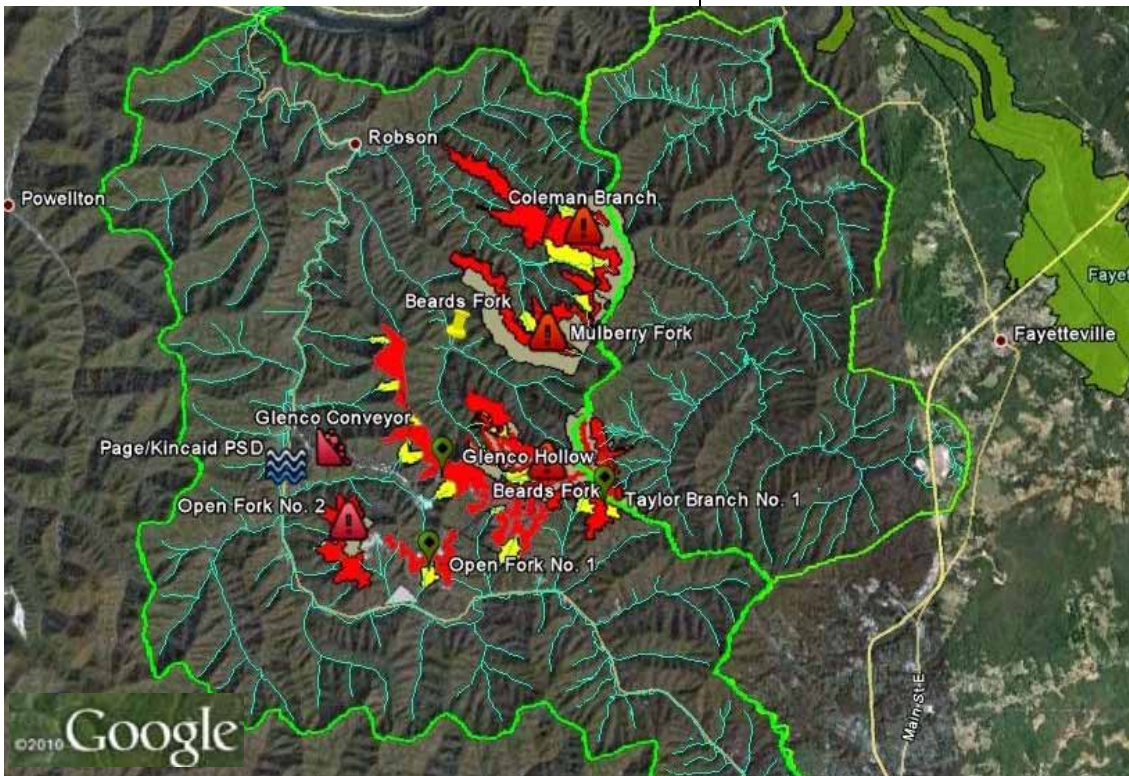
## Natural Processes Treat AMD

Levi Rose, PAN - Watershed Coordinator

Through several grants and funding sources, PAN has generated \$173,000 to continue ongoing efforts at the Summerlee Acid Mine Drainage (AMD) Site.

Phase 1.1 construction began in late fall and after 4 months the project is close to completion. The project is designed to reduce iron and acidity discharged at the site.

The Summerlee mine site is chock full of interesting history, and at one time was West Virginia's deepest mine at 660 feet. Mining at Summerlee is documented in the



Area Map Showing Current and Upcoming Mining Permits



early 1900's and the legacy issues have greatly impacted the headwaters of Wolf Creek. Wolf Creek is a ten-mile stream beginning near Oak Hill, running through Fayetteville and discharging into the New River at Fayette Station.

In 2002, Wolf Creek was put on the 303(d) list by the West Virginia Department of Environmental Protection for high concentrations of iron, aluminum, fecal coliform & biological impairments. The term "303(d) list" is short for the list of impaired waters the Clean Water Act requires all states to submit every two years, for U.S. EPA approval. Wolf Creek has been on this list since 2002, and as a result, Wolf Creek is no longer used as the Town of Fayetteville's primary public water source and no longer stocked with trout.

PAN plans to treat the water quality issues at the site using bioremediation, a process that employs microorganisms, fungi, green plants, or their enzymes to return the environment altered by contaminants to its original condition. The goal is to exploit the natural processes occurring at Summerlee, to will reduce acidity and iron discharging from the site. These processes include the photosynthetic production of dissolved oxygen by eukaryotic microorganisms (green algae, euglenophytes, and diatoms) and the iron-oxidizing metabolism of acidophilic prokaryotes (bacteria) and are critical to the performance of the passive treatment system.

To aid in the implementation and study of the Summerlee Bioremediation Project, PAN has partnered with Bill Burgos of Penn State University. Bill Burgos is a Professor of Environmental Engineering at Penn State University and has been studying systems like Summerlee for the last six years. His knowledge and background on biological low-pH Fe(II) oxidation will be invaluable when studying the performance of the implemented project.

The Summerlee Site has the opportunity to develop into a field-scale research demonstration facility for innovative passive treatments and we are excited to bring university-level research to the area.

The long term goals for this project involve removing Wolf Creek from the 303(d) list for iron and aluminum impairments, meeting in-stream water quality standards and restoring Wolf Creek to a trout-stocked stream.

Go to our website [www.plateauactionnetwork.org](http://www.plateauactionnetwork.org) read about it on the home page and then go to the projects tabs and follow the project on Picasa.



## NRB&NC

Rachel Davis, Marketing Director Wolf Creek Park - Fayette County

Approximately 100 yards upstream from the wetland on an unnamed tributary is a small pond formed by a rusted culvert and road crossing the stream. The pond's

existence expands habitat diversity in Wolf Creek Park and an ideal location for a water testing and learning station.

The New River Birding & Nature Center (NRBNC) replaced the rusted, collapsed culvert, with funding from its watershed education partner PAN, helping to restore the pond and stream habitats.

The pond, nicknamed "WETS" (Water Evaluation Testing Station), will be the main sampling site to demonstrate the role wetlands play in keeping streams clean. Water testing stations will be located along the streams feeding the wetland, in the wetland, and where the wetland empties into Wolf Creek, allowing investigators to compare the wetland's effectiveness at filtering/enhancing desirable/undesirable water components.



Old Culvert Replaced



New Culverts Installed at WETS on Unnamed Wolf Creek Tributary

In addition to testing water upstream of the wetlands, WETS will enable students to learn about macroinvertebrates and other aquatic life. PAN used Stream Partners Grant funds and volunteer hours to help support this project.

*Sharing the secrets of science and nature in the New River watershed with West Virginians and their friends.*

Upon completion, WETS will be available for hands on activities and program delivery through the NRBNC staff, its volunteers, and its partners PAN and NPS.

Through the winter the NRBNC staff has been busy designing wetlands curriculum for public, private and home based school groups and Scouts, and seeking funding opportunities from the



Greater Kanawha Valley Foundation, and the West Virginia Development Office. PAN wrote a letter of support for a grant to perform streambank restoration from the WETS site to the wetland to protect the unnamed trib from parking lot runoff. PAN & NRB&NC are waiting to hear back on that, but we are hopeful and ready with volunteer hours to support that activity.

Look for us on Face Book at Wolf Creek Park, WV.

[www.wolfcreekparkwv.com](http://www.wolfcreekparkwv.com) and [www.birding-wv.com](http://www.birding-wv.com)

## She Was So Commercial

Bemus B Burntknuckle

I was at work. I worked at a service station, which like most full service stations was entering its death throes of becoming just a gas station. There was even talk of self-service, it was 1973 and gasoline had just made its first big jump from 37.9 to 49.9 cents a gallon, (big jump?) there had been outrage and there had been lines and there would be more.

Anyway I was at work, it was nice out for that time of year, cold mind you but not nearly as cold as it had been a few days earlier nor was it as cold as it should have been at the end of November.

I was sitting in the office of the Round Top ZEPHYR having a smoke when a dark blue 1962 chevy rolled slowly onto the lot from Colerain avenue. The car coasted to a stop just after leaving the pike and well short of the pumps. You can always tell when people run out of gas. You can see it just as surely as watching the last drop roll off the rim of a water bucket, the driver just moves faster and faster while a frenzied look develops on their face. Meanwhile, the car goes slower and slower until it stops like some finer point of newtonian physics.

"She's out of gas." I said to Bob, who knew this already as we were both looking out the plate glass witnessing the event, but he said nothing just nodded. The cosmetically beautiful girl behind the wheel looked up and offered a slight (Buy my deodorant) sort of smile.

Well, I had a job to do or rather a task to perform, so I got up and sauntered out to her car. As I rounded the front of her vehicle I noticed that her window was still up so as I reached her door I bent slightly at the waist with my arms moving in front of me as if I was going to place my greasy sleeves on her car door. This is a gesture developed for the slow and less intelligent, it seems to make them aware that they have just watched you walk out to their car. They need your assistance, and they must converse with you. You are now standing there and perhaps they should roll their window down now, mind you it's cold.

"Outa gas, eh?", I said knowingly.

"Yes, I guess I am, Why I thought those other cars were going to run right over me, (without even buying any of my deodorant)".

"Yes M, well the best thing to do then is to pull her up to the pumps, and the best way to do that is to put her in drive and turn the key. The starter'll walk that baby right on up there."

"But won't that hurt my car?, (How do like my eye shadow?)".

"Nope.", I waited just a second, "Of course if your worried I could go get the truck and push you up to the pumps but, I've seen quite a bit of damage occur that way, mismatch of bumpers and all, you see." So she did as instructed, barely missing the pumps and stopping with an embarrassed amusement and a sly smile, (I'm glad I use Dial, what kind of soap do you use?) and she just sat there while I stood by waiting for her to come back to the matter at hand.

In fact I knew I would have to be the one to do that, forget that it was 'her' car, forget that 'she' was the one who needed gas for all it mattered, at this point forget that it was cold. She done it, she put me in that John Q. Public mood. In fact, I think she'd done this before I'd even made it out to her car, maybe she had even had accomplices who'd been coming in all morning to set me up, maybe for that matter I'd just been doing this too long. So after a significant pause I ask; "Would you like any gas?"

"Oh! yes; \$2.00 worth please.", she said while looking in the mirror and fussing with her hair (I like this new hair spray).

"Pardon me, miss; but I must point out that you just ran out of gas and being relatively certain that this is not a real enjoyable experience, allow me to tell you that the most prudent and economical way to buy gasoline is to get a fill up each and every time you pull up to the pumps. This immediately reduces the number of times which you have to pull up to the pumps. In addition, it reduces the amount of time and gas used getting to the pumps, and you know how these lines can get these days.", I said this with my very best (If you can't trust your pump jockey, who can you trust?) smile.

"Really?" she said, "Okay, then give me \$5.00." (the little dip of her neck said "I hope my deodorant is holding up").

So I got her gas, cleaned her windshield, took her money, made change, she gave me a ten. The whole time she kept looking at me with that (Buy my deodorant) smile. "Thank you and stop in again.", I said, "and by the way, I don't use deodorant."

Off she drove, no less confused getting back out on the pike and back into her disinfected, odor free, billboard life style and me, I turned back toward the office of the Round Top ZEPHYR to have a smoke and shake off the cold.

## Make It Shine

Kerren Hall

I'm sure many of you enjoy recreating along the New River, for many it is why we live here. The trail from Cotton Hill Bridge to the base of Hawks Nest dam offers scenic hiking, fishing, and even climbing on the boulders near the dam.

Unfortunately garbage brought downstream gets deposited along the banks and stays there which is what this project is all about. There will be a cleanup based from the parking lot on Sunday April 10th at noon, as part of the statewide "Make It Shine" program.

Bags and refreshments will be provided. Please bring gloves and wear long pants and boots. We will be focusing on plastic and plan to recycle what we gather. Your



help will be greatly appreciated and will kick off a contribution to Earth Day week to be proud of.

Any questions or concerns contact Kerren Hall 304.731.8063. In case of inclement weather, bring a raincoat. Thank you!

## Fayette County Farmers Market

Meredith Gregg

Fayette County Farmers Market Season Openings in Fayetteville Saturday May 7 (day before Mother's Day) 7:30 am - 11:30 am County Court House Parking lot on E Wiseman Ave.

Oak Hill Market to open Thursday May 12 4:00pm - 7:00pm, parking lot between BB&T Bank and the Bellann Building on Main St.



## Adopt-A Highway

Kerren Hall

A regular Adopt A Highway cleanup will take place the on Sunday, April 17th, at 2pm. The meeting place is the Fern Creek Trailhead parking lot. Cleanup is Lansing Rd. from Hwy 19 to Edmond Rd.

This is the first of 3 annual cleanups we've been doing since 1996. Please consider joining us with your friends and family in showing pride in the beautiful place we live. It only takes a couple hours out of your day and we always feel good about ourselves when we're finished. Thanks and many blessings to you!

## NRCWA

Heather Lukacs

After a year of research and analysis the New River Clean Water Alliance (NRCWA), released a draft of *The Lower New River State of the Watershed Report*. The draft Executive Summary and draft Report are available in downloadable PDF formats at: [www.npca.org/newrivercleanwater](http://www.npca.org/newrivercleanwater).

Suggestions to improve the report can be emailed to the [NewRiverAlliance@gmail.com](mailto:NewRiverAlliance@gmail.com).

The New River Clean Water Alliance is a partnership dedicated to promoting clean water and community efforts in the Lower New River watershed. The Lower New River watershed is defined as all the land area that drains into the New River from Hinton to Hawks Nest and includes parts of Summers, Raleigh, and Fayette Counties in West Virginia. The Alliance includes representatives from the following organizations: Piney Creek Watershed Association, Plateau Action Network, WV Department of Environmental Protection, Mountain Resources Conservation and Development, National Committee for the New River, West Virginia Professional River Outfitters, National Park Service, and National Parks Conservation Association.

As a member of the New River Clean Water Alliance, PAN has worked for months helping produce the State of the Watershed Report. This report, will be used to se-

cure funding and create projects addressing water quality issues in our watershed and we salute the efforts of this team of concerned and dedicated folk.

## Forks in the Road

Eric Autenreith

The MOU with NCNR expresses how our two organizations can help each other. NCNR ([ncnr.org](http://ncnr.org)) has spent most of its 36 years focused in North Carolina and Virginia and they are looking to expanding their protection and advocacy efforts into WV. PAN offers great connections and a good reputation with state and county agencies and PAN knows what the issues are around the Lower New River Gorge. NCNR offers PAN fundraising experience, support in advocacy and possible administrative support in managing membership information, producing and mailing newsletters. We think it will be a good step towards PAN's sustainability.

PAN has initiated efforts to secure charitable tax credits from the state to help PAN raise money (let us know if you would be interested in tax credits!).

And perhaps the heaviest news is that mountain top removal mining has been going on in Fayette County the past 4-5 years and is about to work it's magic over the mountains from Page to Beckwith.~ 6 miles west (upwind) of Oak Hill and Fayetteville.

The board met to discuss the role PAN will play in the effort to protect Fayette County's natural resources. We will be drafting a position statement and will do our best to keep you informed with good information. Please let us know what you think and please be involved in this critical issue.

Intact forest ecosystems, clean surface and ground water quality, clean air, safety of the public in their homes and on the roads all contribute to a sustainable economy and the quality of life for present and future residents. Another fork in the road...how bad do you want it?

## Ed's Notes

Well we put another one to bed. Looks like the natives are fired up on the mountain top removal thing. I'll suggest they bring a lunch - this will be a long one.

Bemus' little tale takes it back to another energy source and the price is going up. I've heard several sources state that we could reduce our national energy consumption by over 40%, if we reduced our individual use.

You know, replace bulbs with those compact fluorescents, turn stuff off when not in use, bumping the thermostat down when its cold/up when its warm.

Practicing the 4 R's of recycling - Reduce, Reuses, Repurpose, and Recycle can obviously help too.

But I don't understand why they keep making stuff that uses energy when it's not being used. Why can't I buy stuff that doesn't have an LED "lit" to let me know that device is 'Off', and the little power packs/chargers it seems everything has to have. Maybe if we stop buying stuff that doesn't turn off - they'll quit making it.



We all need to accept the fact that the days of cheap energy are over and ask if we are willing to pay the price it takes to cut down our part in the puzzle. Coal, Oil/Gas, Natural Gas, Wind, etc. all come at a cost to the environment, community, consumer, but we have a voice in what/where that cost is and what impacts we are willing to accept.

## Schedule of Events

### 7 March - MTR Public Meeting in Fayetteville

Contact Stephanie Tyree for time and place [see *On a Mountain Top Near You?* pg 4]

### 26 March - Rain Barrel Workshop at Raleigh County Recycling Center

See flier at top of column and reserve your rain barrel now.

### 26 March - PAN Annual Fund-raiser

7- 11pm, at Smokey's on the Gorge, Tickets \$30/person, \$50/couple [see *PAN Spring FUNdraiser!* pg 1]

### 10 April - Dam Clean up at Hawks Nest

Noon at Cotton Hill Bridge parking lot [see *She Was So Commercial* pg 6]

### 17 April - Adopt-A-Highway

2pm meet at Fern Creek Trailhead parking lot [see *Adopt-A Highway* pg 7]

### 22 April - Wild & Scenic Film Festival 1st Showing

6:30pm, at Historic Fayette Theater - \$5 tickets [see *Wild & Scenic Film Festival* pg 2]

### 23 April - Earth Day Celebration

11am - 5pm, downtown Fayetteville [see *Earth Day 2011* pg 2]

### 23 April 23 - Wild & Scenic Film Festival 2nd Showing

7pm, at Historic Fayette Theater - \$5 Tickets [see *Wild & Scenic Film Festival* pg 2]

### 7 & 12 May - Fayette County Farmers Market

2011 start dates [see *Fayette County Farmers Market* pg 7]

## Regular Local Events

### GREAT Team

Meets on the last Monday of the Month at Fayetteville Convention & Visitors Center. Go to [www.greenwv.org](http://www.greenwv.org) for specific times & dates.

### New River Birding & Nature Center 2<sup>nd</sup> Saturdays

Different Nature programs on the 2<sup>nd</sup> Saturday of the month.

## Rain Barrel Workshop



March 26<sup>th</sup> at the Raleigh County Recycling Center

Ragland Road, Beckley  
(turn onto Raleigh County Landfill, scale house staff will direct you)

**Reserve** your barrel by **March 14th!** Call **304-228-1680** or email: [pineycreekwatershedassociation@gmail.com](mailto:pineycreekwatershedassociation@gmail.com)

Cost is \$25 for the barrel- 55 gallon food grade plastic, precut for the fittings which are included. Quantity is limited.



## Check Us Out

PAN meets first Tuesday of the month 6:00 pm, at Gregg Studios, in Fayetteville or River Rock Hostel, in Lansing. For more information call our Office at 304 574-4726 or a board member.

PAN Board of Directors	
Mark Ehrnschwender – Chair	304.574.1993
Mark Lewis – Co-chair	
Eric Autenreith – Secretary	304.574.1067
Joy Marr – Treasurer	304.574.0394
Gene Kistler – WCET Trustee	304.663.2521
Chris Darrow	

Levi Rose – Watershed Coordinator	
levidrose@gmail.com	740.591.1750
Laurel Ackison OSM-VISTA	
ackison@live.marshall.edu	304.574.4726



## Membership Form

PAN POB 482 Fayetteville WV 25840

Please Print

Name \_\_\_\_\_

Phone ( ) \_\_\_\_\_ - \_\_\_\_\_

Address \_\_\_\_\_

Email \_\_\_\_\_

City \_\_\_\_\_ State \_\_\_\_\_ Zip \_\_\_\_\_

Yes, I would like to support PAN at this membership level \_\_\_\_\_

Individual @ \$20

Senior @ \$15

Family @ \$35 +

Student @ \$10

I do not want PAN to use my personal information to contact me for activities of related groups.

Enclosed is an additional contribution of \_\_\_\_\_

memform5.fm

11.4

3/7/11

Or go to [www.plateauactionnetwork.org](http://www.plateauactionnetwork.org) to sign up & donate.